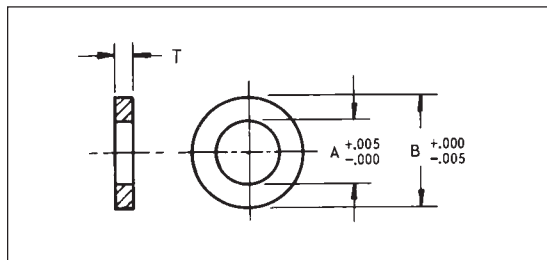
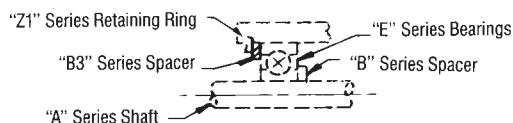


OUTER RACE SHIM SPACERS



Material: 300 Series Stainless Steel

EXAMPLE



THICKNESS TOLERANCES			
T	.003 to .007	.010 to .020	.062 to .500
Tolerance	±.0005	±.001	±.002

Bearing Size (Ref.) I.D. X O.D.	A	B	T	Part No.
3/64 X 5/32	.088	.153	.003	B3-39
			.005	B3-40
			.007	B3-41
			.010	B3-42
			.020	B3-43
.055 X 3/16	.123	.178	.003	B3-44
			.005	B3-45
			.007	B3-46
			.010	B3-47
			.020	B3-48
5/64 X 1/4 & 1/8 X 1/4	.167	.248	.003	B3-31
			.005	B3-32
			.007	B3-33
			.010	B3-34
			.020	B3-49
3/32 X 5/16 & 1/8 X 5/16	.206	.310	.003	B3-35
			.005	B3-36
			.007	B3-37
			.010	B3-38
			.020	B3-50
1/8 X 3/8 & 3/16 X 3/8	.253	.373	.003	B3-1
			.005	B3-2
			.007	B3-3
			.010	B3-4
			.020	B3-5
			.062	B3-16
			.125	B3-17
			.250	B3-18
			.375	B3-19
			.500	B3-20

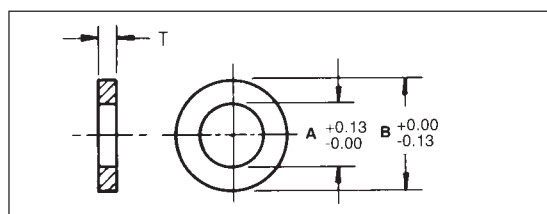
Bearing Size (Ref.) I.D. X O.D.	A	B	T	Part No.
3/16 X 1/2 & 1/4 X 1/2	.378	.498	.003	B3-6
			.005	B3-7
			.007	B3-8
			.010	B3-9
			.020	B3-10
1/4 X 5/8	.503	.623	.062	B3-21
			.125	B3-22
			.003	B3-11
			.005	B3-12
			.007	B3-13
3/8 X 7/8	.687	.873	.010	B3-14
			.020	B3-15
			.062	B3-26
			.125	B3-27
			.003	B3-51
			.005	B3-52
			.007	B3-53
			.010	B3-54
			.020	B3-55
			.062	B3-56

OUTER RACE KITS

Bearing Shaft Spacers—Stainless Steel Outer Race. Assorted Thickness for 1/8", 3/16" & 1/4" Bearing Bores	350	Y28K
-----------------------------------------------------------------------------------------------------------	-----	------

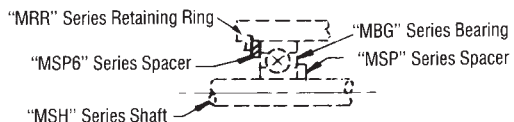
METRIC OUTER RACE SHIM SPACERS

All Dimensions in Millimeters



Material: 300 Series Stainless Steel

EXAMPLE



THICKNESS TOLERANCES				
Thickness (T)	0.1	0.25	0.5	1.5
Tolerance	±0.013	±0.025	±0.025	±0.05

Bearing Size (Ref.) I.D. X O.D.	A	B	T	Part No.
3 X 7	5	6.95	0.1	MSP6-1
			0.25	MSP6-2
			0.5	MSP6-3
			1.5	MSP6-4
4 X 9	6.5	8.95	0.1	MSP6-5
			0.25	MSP6-6
			0.5	MSP6-7
			1.5	MSP6-8
5 X 11	8	10.95	0.1	MSP6-9
			0.25	MSP6-10
			0.5	MSP6-11
			1.5	MSP6-12

Bearing Size (Ref.) I.D. X O.D.	A	B	T	Part No.
6 X 13	9.5	12.95	0.1	MSP6-13
			0.25	MSP6-14
			0.5	MSP6-15
			1.5	MSP6-16
8 X 16	12	15.95	0.1	MSP6-17
			0.25	MSP6-18
			0.5	MSP6-19
			1.5	MSP6-20
10 X 19	14.5	18.95	0.1	MSP6-21
			0.25	MSP6-22
			0.5	MSP6-23
			1.5	MSP6-24